

STABLEWALL INSTALLATION GUIDE

This guide is to inform the installer on the proper installation of the Stable Comfort: StableWall System. This system is simple to install and offers top line comfort for the horses that will be enjoying this system.



TOOLS REQUIRED:

Chalk line



Level



Measuring tape



Cutting knife



Electric power drill



Cordless Drill



Drill Bits

- Concrete (1/4")
- Wood
- Steel



Pencil/pen



Hamer



Vice-Grips



Work gloves



Step-By-Step Installation Instructions:



1. Clear the stall of any debris, including sharp edges, dirt & organic materials.

Remove any obstacles from the wall such as feeders.



2. Measure the height of the wall of the stable and record the number.

Measure the length of the stall and record it as well.



3. Mark the height of the cover **PLUS 6" (15cm)** to add leeway for the foam. Do this on both vertical ends also.



4. Use a chalk line to connect the marks made in Step 3.



5. Cut the cover along the chalk-line.



6. Pre-drill the plastic strips every 6" (15cm) as this will make it easier to install the strips. Drill the holes in the following pattern:



Measure the length of the wall, then cut the plastic strip. This is best done by scoring one side of the strip with a knife, then snap the strip backwards.



7. Place the cover against the wall and have a helper hold it in place.

Hold it so that there is 6" (15cm) of extra material on each side.

Anchor the bottom of the cover to the wall with screws and the plastic strip.



8. Using adhesive, tack the first layer of foam to the wall (3/4" (2cm)-1 layer of foam, 1.5" (4cm)-2 layers of foam). If you are installing the double layer, stagger the foam pieces so the seams are not in top of each other.

You may also use temporary screws with large washers to tack Stable Wall pads to the wall. These fasteners **MUST** be removed prior to Step 9, as they may **PUNCTURE** the top cover. Damage from these fasteners is **NOT** covered by Stable Wall warranty.



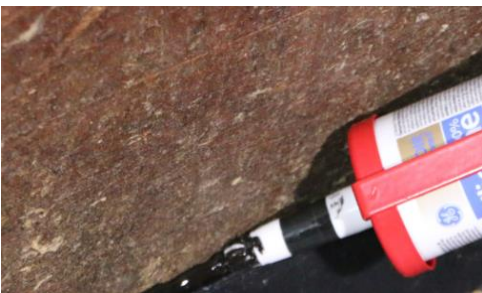
9. Once your foam is in place, pull your top cover up and over the foam. Using an EZ-Grip or vise grips, pull tightly upwards, having a helper follow behind installing the top plastic strip using the appropriate fasteners. Make sure the cover is being pulled as tightly as possible. The cover's tightness will ensure longevity of the product.



10. Repeat the Steps 1-9 for each wall. Once your top strip is attached, install the vertical side strips by fastening them tightly.



11. Remove the excess top cover around the top of the stall by using a sharp knife and cutting along the top of the plastic strip.



12. To promote the waterproof characteristic of StableWall, it is recommended that a bead of caulking be added along the edge of the plastic strip.



12. Any feeders or other wall features may be installed over the Stable Wall.



13. Clean the stall area up. The system is now ready to use!